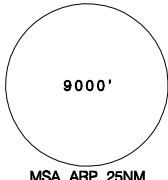
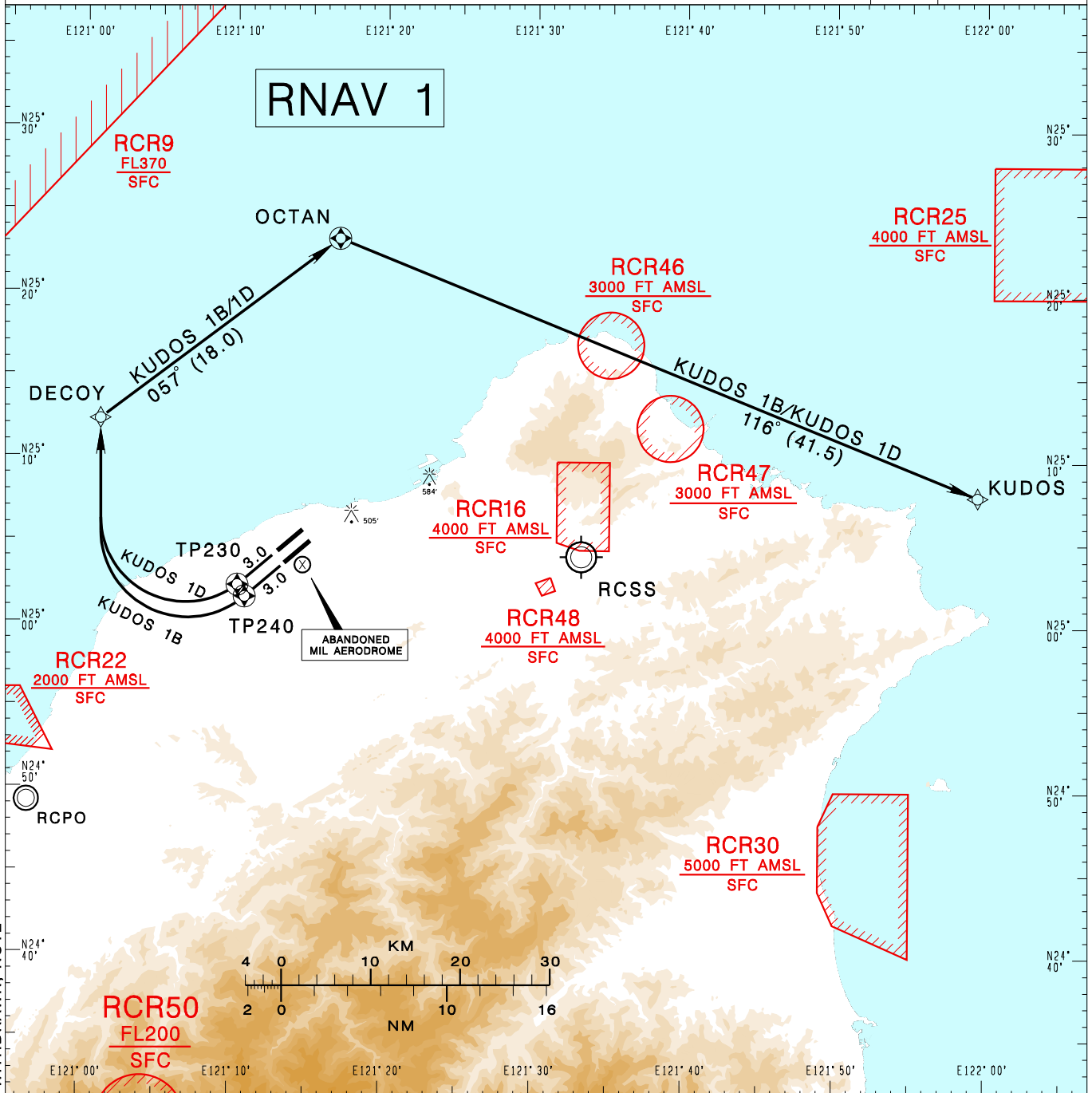


臺灣桃園國際機場
TAIPEI/TAIWAN TAOYUAN INTL AD

RCTP SID
KUDOS 1B RNAV(RWY23L)
KUDOS 1D RNAV(RWY23R)

TAIPEI APP 125.1 128.5	TAIPEI TWR 118.7 129.3	ATIS 127.6		
Apt Elev: 108'		Trans Level: FL130		Trans Alt: 11,000'
BEARINGS ARE MAGNETIC; DISTANCES ARE NAUTICAL MILES; ELEVATIONS, HEIGHTS IN FEET				



CHANGES: RCR49 COMPLETELY WITHDRAWN; NOTE

KUDOS ONE BRAVO RNAV DEPARTURE
Climb on RWY HDG until leaving 600ft, then direct to TP240, DECOY, OCTAN, then to KUDOS.

KUDOS ONE DELTA RNAV DEPARTURE
Climb on RWY HDG until leaving 600ft, then direct to TP230, DECOY, OCTAN, then to KUDOS.

NOTE

1. RWY 23R/23L speed restriction of 210KT IAS maximum until established on track to DECOY.
2. Minimum climb gradients required: RWY 23L 3.4%(210 ft/NM) until TP240.
3. ATS surveillance required.